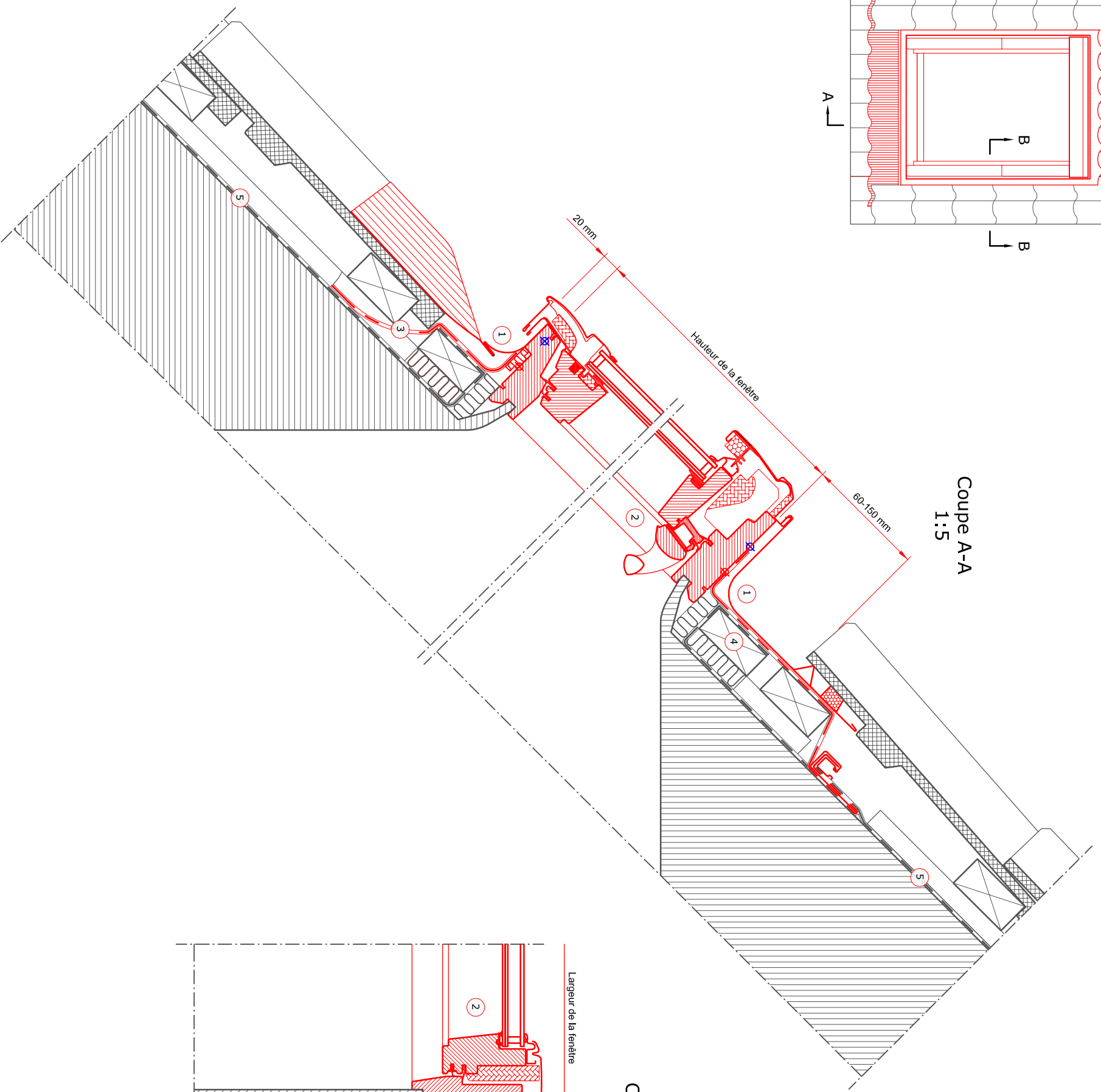
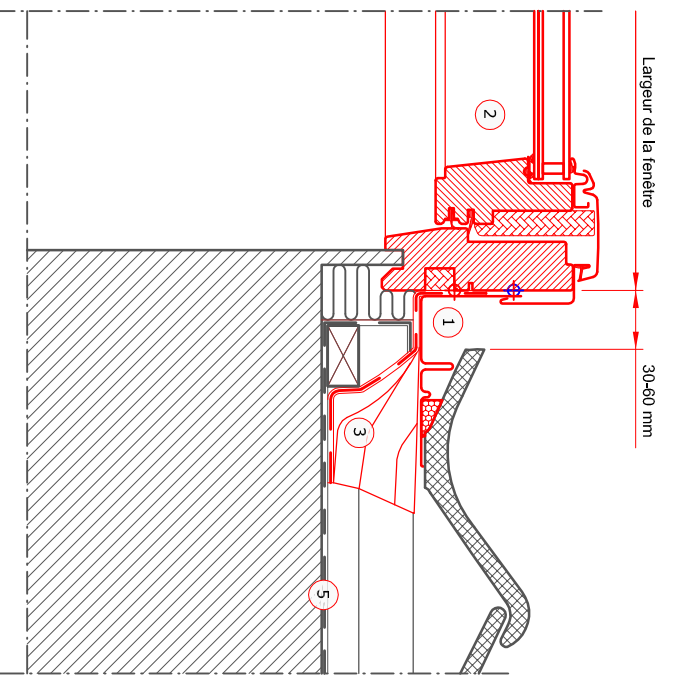


Coupe A-A
1:5

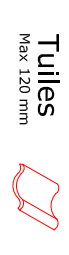


Coupe B-B
1:5



- ① VELUX Raccord (EW 15°-90°)
- ② VELUX Fenêtre de toit (GGL 15°-90°)
- ③ VELUX colerette de sous-toiture (BFX)
- ④ Latte de montage (Non VELUX)
- ⑤ Sous-toiture (Non VELUX)

Couverture de la toiture :



Tuiles
Max 120 mm

Produits VELUX :

- GGL 15°-90°
- EW 15°-90°
- BFX

Dimensions:

Taille	Largeur (mm)	Taille	Hauteur (mm)
BK--	472	-K02	778
CK--	550	-K04	978
FK--	660	-K06	1178
MK--	780	-K08	1398
PK--	942	-K10	1600
SK--	1140	-K12	1800
UK--	1340		

© VELUX GROUP VELUX, VELUX logo are registered trademarks

File name: DRAWING 04.01 EW-GGL - FR

Drawing no.: 04.01 VB-0716 SCO: V-B

Create date:	Rev. date:	Format:	Scale:
01.11.2013	07.07.2016	A3	1:5

Note: When installing VELUX Roof Windows, flashings and installation products, the manufacturers' instructions and current building and fire regulations, where applicable, must be met.